



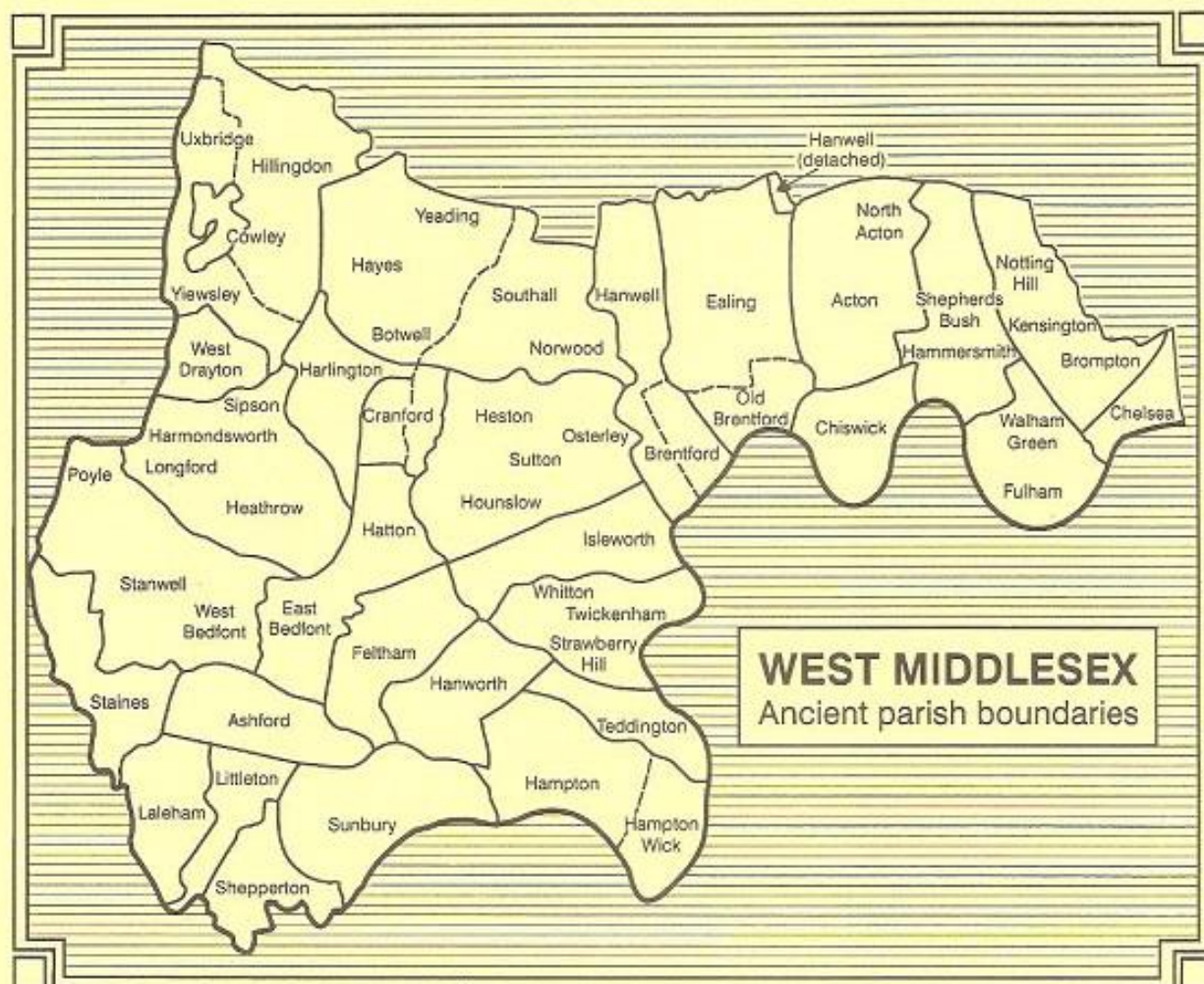
# WEST MIDDLESEX FAMILY HISTORY SOCIETY

# JOURNAL

VOL 18 No. 2

ISSN 0142-517X

JUNE 2000



## WEST MIDDLESEX FAMILY HISTORY SOCIETY

### Executive Committee

Chairman	Leslie Munson 41 Trotsworth Avenue, Virginia Water, Surrey GU25 4AN	
Secretary	Mrs Mavis Burton 10 West Way, Heston, Middlesex TW5 0JF	
Treasurer	Ms Muriel Sprott 1 Camellia Place, Whitton, Twickenham Middlesex TW2 7HZ	
Membership Secretary	Mrs Bridget Purr 9 Plevna Road, Hampton Middlesex TW18 1EF	
Editor	Mrs Yvonne Masson 65 St Margaret's Grove, East Twickenham Middlesex TW1 1JF	
Publicity Officer	Ted Dunstall 43 Elers Road, Ealing, London W13 9QB	
Programme Secretary	Mrs Antonia Davis 20 Evergreen Way, Hayes, Middlesex	
Committee Members	Jim Devine Margaret Harnden Patrick Harnden	Robin Purr Sue Willard
Society Web site	<a href="http://www.west-middlesex-fhs.org.uk/">http://www.west-middlesex-fhs.org.uk/</a>	
Subscriptions	All Categories: £9.00 per annum	
Subscription year	1 January to 31 December	
Examiners	Paul Kershaw and Wendy Mott	

In all correspondence please mark your envelope WMFHS in the upper left-hand corner; if a reply is needed, a SAE/IRCs must be enclosed. Members are asked to note that receipts are only sent by request, if return postage is included.

**Contents**

Jottings from the Chairman .....	2
Future Meetings .....	3
Annual General Meeting .....	3
News Roundup .....	10
Robert Chandler .....	12
Certificate Courier Service .....	12
High Bridge and Ravenscourt Rowing Clubs .....	13
Non-Conformist Records at the Public Record Office .....	16
Hang on, your name's familiar .....	17
Directory of Members' Interests 2000 .....	18
If only they were all like this! .....	19
The Search for James Joseph Woodward and Richard Bond .	20
Society Publications on Microfiche .....	23
Help! .....	25
Bookshelf .....	27
Twentieth West London Local History Conference: 2000 Years of West London History .....	28
Past Meetings .....	32
Editor's Notes .....	34
New Members .....	35
Surname Interests .....	36
Indexes Held by Members .....	40

© West Middlesex Family History Society and contributors 2000.

No part of this publication may be reproduced in any form or by any means without permission. Articles in this journal do not necessarily reflect the opinions of the Editor and the Executive Committee. The Society cannot vouch for the accuracy of offers of services or goods that may appear.

All articles and other items for the Journal should be sent to:

Mrs Yvonne Masson  
65 St Margaret's Grove, East Twickenham, Middlesex TW1 1JF

Exchange journals from other societies should be sent to:

Mrs Mavis Sibley  
13 Blossom Way, West Drayton, Middlesex UB7 9HF

Queries concerning non-delivery or faulty copies of this Journal should be sent to:

Mrs Bridget Purr  
9 Plevna Road, Hampton, Middlesex TW12 2BS

I was pleased, and I, am sure the rest of the Officers were to see such a good attendance at this year's AGM. It gives encouragement to us all. I wonder if moving the date from December to March played a part!

I am informed by Lewis Orton that my appeal for further volunteers resulted in the recruitment of several new transcribers for the 1891 Census Indexing Project. Richard Chapman is looking for a suitable format for putting the transcriptions onto computer to enable an index to be produced. No doubt we shall be requiring members with computers to help in this new task but not yet. The transcribing is progressing well with about 75% completed.

Whilst on the subject of computers, I can now tell you that Jill has a new computer capable of making full use of the 1881 Census National Index. She is willing to search the National Index for those members who have not been able to locate a person in the County where they expected to find them. This will automatically be done where members request a search of the Census and are unable to state a County. It is important that she is given the fullest details that are known about the person, such as forename, approximate age, place of birth etc., as printing out a complete list of all names found could work out very costly for the researcher. For example, a request for the name Brown would give more than 204,000 matches. Even looking for only John Brown, there are over 13,000 entries.

In the December journal we published the opening times of the Mormon Chapel Family History centre at Staines. I have now heard that there may be a restriction on the length of time that a viewer may be used. If any member knows what the new restrictions are, please let me know and they will be published in the Journal.

The Society's Officers often receive letters from members and non-members, requesting assistance with their research. The Officers cannot undertake research, but will redirect enquiries to any known source of information. Last month I was asked by a lady, a non-member, living in Canada, if I could supply information on the name Horsenden. If anyone has this surname in their records, let me know and I will forward your reply to her. She may have information which will help your research.

When we attend Open Days and Shows, we use a large display board on which we try to show some of our Society's activities. The panels on the board are 2ft wide and 3ft high. If you have drawn a Family Tree which could occupy one of these spaces, we would be pleased to receive a copy to replace a quickly drawn copy of my own tree which, nevertheless, always attracts attention. Other items which illustrate the work of the Society would also be welcome.

---

## FUTURE MEETINGS

---

The following talks have been arranged:

- |              |   |
|--------------|---|
| 18 May       | <i>A Slow Boat to Paradise: 19C Emigration</i><br>Jim Golland                       |
| 15 June      | <i>The Parish Chest</i><br>Ron Cox  |
| 20 July      | <i>Paupers, Pensioners and Privates: Charity and the Army</i><br>Major Brian Oldham |
| 17 August    | <i>London: the Metropolitan Nightmare</i><br>Paul Blake                             |
| 21 September | To be arranged  |
| 19 October   | <i>History of London and its water supply</i><br>Derek Gooding                      |
| 16 November  | <i>Did he really commit murder?</i><br>Ian Waller                                   |
| 21 December  | To be arranged  |

The meetings are held on the third Thursday of each month at Montague Hall, Montague Road, Hounslow, and start at 7.30 p.m.

---

## ANNUAL GENERAL MEETING

---

The Minutes of the Annual General Meeting of the West Middlesex Family History Society held at Montague Hall, Montague Road, Hounslow on 16th March 2000.

### **1. Apologies for absence**

Apologies for absence were received from Howard Stephens and Sheila Scott.

### **2. Approval of the minutes of the 1998 AGM**

The Minutes were approved and signed, and there were no matters arising.

### **3. Treasurer's Report and Approval of Examined Accounts**

Good evening Mr Chairman, ladies & gentlemen.

If you think that AGMs are boring, this is my second one this evening, so I've got no sympathy for you!

This is my penultimate report to you as Treasurer, so if anyone has a calculator, reasonably legible writing and a logical please think seriously about whether you could take over this job in a year's time.

It always seems inadequate, but as usual I offer grateful thanks to everyone who has contributed to the financial well-being of the Society. Please be aware, when you look at these accounts, that nothing "just happens". The Society depends entirely on the unpaid work put in by many of our members who give so generously of their time.

I do not apologise for emphasising the fact that no-one makes any income for themselves from the Society's activities. In fact I would suggest that most volunteers end up out of pocket. We go to Open Days, the Family Records Centre etc and sometimes claim travel costs, but in the five years I have been doing this job I've never seen anyone claim for so much as a cup of coffee. I'm sorry if you think I am labouring this point, but it has been brought to my attention that suspicions have been voiced that some individuals are profiting from Society activities. I say again this is not so.

Running briefly through the receipts and payments account, I'd just like to mention a few points. Increased journal production and delivery costs reflect both a fuller journal and the increased use of illustrations, which we hope make for a more interesting journal.

Bookstall sales are up, but profits down: our hardworking volunteers are trying to sell off some old, tired stock and make space for attractive new stock.

Our Open Day was very successful with thanks to everyone who worked so hard, especially Peter Roe who did all the organising. The Church Hall rent had increased considerably, hence the loss, but we feel it was an important PR exercise.

Other income and the overhead expenses are, I hope, self-explanatory. "Miscellaneous expenses including publicity" consists mainly of £614 publicity costs which includes the costs of attendance at Open Days. The remaining £95 covers Christmas gratuities to the caretakers and the Society's donation in memory of Yvonne Woodbridge.

I'm now slightly embarrassed at having asked for an increase in the subscriptions. Despite the subscriptions covering a 15 month period, we still had a slight surplus. It just highlights the problem of trying to forecast a year in advance.

Turning to the Balance Sheet and the fixed assets, you will notice that I have written down to nil value the computer, the virus-checking software and the banner, all of which are past their prime. We have bought some smart new display boards which look great and were really very inexpensive.

The current assets show a reduction in the value of bookstall stocks - perhaps in a year's time we'll just have good quality new stock in hand.

You will see that our cash reserves have increased, but we cannot relax. We are now paying for storage space for some of our equipment. Given the problems of finding a home for our library, we may well need to rent more storage space in the future

It's some two years since we bought the 1891 census to index. I confess to being a very slow transcriber, but if everyone transcribed a couple of pieces I'm sure we'd soon get the job completed. Lewis Orton will be happy to allocate a piece for you. The reason I mention this is because as an educational charity we should be publishing; we do not wish to jeopardise our charitable status.

After four years of sharing a table with Peter Roe at the monthly meetings, I'm sad to say goodbye, but hope that Peter will drop by and share a grumble now and again. In his place I'm happy to welcome Bridget Purr as membership secretary.

I'd like to close by thanking Wendy Mott and Paul Kershaw for their examination of the accounts.

If there are any questions I'll do my best to answer them. Thank you.

The accounts were unanimously approved.

#### **4. Appointment of two accounts examiners**

The current accounts examiners, Wendy Mott and Paul Kershaw, stated their willingness to stand again, and were duly appointed.

#### **5. Report by the Chairman**

I am pleased to report on the Society's activities during the past 15 months.

A major change that was agreed at the 1998 AGM was to alter the Society's financial year. It now runs from January to the end of December; hence, on this occasion, a 15 month report is presented.

During the year the Society continued to hold regular monthly meetings at which various speakers gave some interesting and informative talks. In September the ever-popular Michael Gandy spoke about Irish Ancestors, and we probably had our best attendance on that particular evening.

Two major events took place during the year. In August we celebrated the 21st Birthday of the Society with a party and Birthday Cake. As usual, our thanks are due to the members whose organisation and help made the evening so successful. We invited, as special guests, as many of the founder members as we could locate. Each founder member was given a certificate conferring lifelong Honorary Membership.

The second milestone was our biennial Open Day held in September. Excellent organisation by Peter Roe helped make this event a great success, and it was pleasing to have so many members volunteering for the various jobs.

Richard Chapman has taken over the West Middlesex Marriage Index from Janet Huckle, and apart from supplying information from the index, he has many more marriages to add to the list.

The Society was represented at several Open Days held by neighbouring Societies as well as the Middlesex County Show and the Society of Genealogists Fair. A new display board was purchased, enabling us to display items showing the work of our Society.

Also purchased was the 1881 Census on CD Rom covering the whole of Great Britain.

We have a good Strays Index which has not been very widely used, possibly as it can only be made available at meetings. Wendy Mott, a tireless worker for the Society, has kindly agreed to start computerising the list, thus making it more accessible to all members.

Bridget Purr has taken over the job of Membership Secretary from Peter Roe who is due to retire from the committee this year. Joan Scrivener, having served for six years, is also leaving the committee, but fortunately will still continue to provide a printing service for us.

We are already receiving invitations to attend the Open Days of other Societies during the coming year. We have accepted the opportunity to open our stall at this year's Middlesex County Show, and a table has been reserved at the Society of Genealogists Fair in London in May. The Secretary is always pleased to hear from members willing to assist at any of these functions.

Membership increased again last year and climbed to an all-time high. We received applications as a result of an article in *Practical Family History* magazine, whilst some members came as a result of our Website.

The Society is fortunate in having competent and hard-working officers and



I wish to thank them for the support they have given to me despite the fact that, due to ill health, I have been absent from several meetings. I am sure the Society will be well served by them during the coming year.

### **5. Elections of Officers and Committee for the year 2000/1**

All current members of the Committee were returned unopposed, with the exception of Peter Roe and Joan Scrivener, who having served for six years, must stand down. The two proposed new committee members were elected:

Margaret Harnden, proposed by Bridget Purr and seconded by Mavis Burton  
Patrick Harnden, proposed by Muriel Sprott and seconded by Joan Scrivener

### **Any other business**

There being no other business, the meeting was closed.



After the business of the AGM was concluded, our Programme Secretary Toni Davies gave a very well-researched talk on the subject of “Thieftakers, Parish Constables and the Early Police”.

In a time when there was no Police Force as we now know it and magistrates were rewarded for the number of people they convicted, the so-called thief-takers rose to prominence and wealth, epitomised by the notorious Jonathan Wild, who tracked down some of the most desperate criminals of his day and has been called the father of modern detection, but due to his too close links with the underworld was himself ultimately condemned and hanged. Parishes elected Parish Constables to be responsible for local law and order but it was an extremely unpopular post and was often deputed to very unsuitable candidates who could often find no other form of employment, as was also the case with the Watchmen, who were often old and infirm.

With rising populations in the towns and the accompanying rise in crime, there was obviously a need for trained police officers and the first of these were known as the Bow Street Runners but these had to be aided by troops when called upon to cope with major incidents like riots. By 1828 there were several hundred paid police officers, and after the 1829 Police Bill the Metropolitan Police Force was formed, leading ultimately to the countrywide police force we take for granted today.

**WEST MIDDLESEX FAMILY HISTORY SOCIETY  
15 MONTHS TO 31 DECEMBER 1999  
RECEIPTS AND PAYMENTS ACCOUNT**

	<i>15 Months</i> <u>31/12/99</u>	<i>12 Months</i> <u>30/9/98</u>
<b>MEMBERS' SERVICES</b>		
Subscriptions	5,769	5,377
Bank Interest	597	516
Tax refund on covenants	262	259
Advertisements in journal	105	23
Sale of back journals	<u>23</u>	<u>16</u>
	6,756	6,191
Journal production and delivery	4,459	3,230
Hire of meeting hall	951	587
Speakers	353	318
Members' interests booklet	<u>0</u>	<u>351</u>
	5,763	4,486
	993	1,705
Bookstall sales	1,754	1,185
Less: cost of sales	<u>1,477</u>	<u>833</u>
	277	352
Fiche sales	1,054	1,043
Less: cost of sales	<u>380</u>	<u>732</u>
	674	311
Postal book service	531	578
Less: cost of sales	<u>431</u>	<u>471</u>
	100	107
WMFHS Open Day	380	0
Less: associated costs	<u>495</u>	<u>0</u>
	-115	0
<b>OTHER INCOME</b>		
Donations	20	7
Courier service	563	282
Refreshments	65	50
Raffles	393	270
WM marriage index searches	211	231
1881 census index searches	135	315
Other research income	<u>59</u>	<u>84</u>
	1,446	1,239
	3,375	3,714
<b>OVERHEAD EXPENSES</b>		
FFHS subscription and insurance	343	348
Membership of other societies	13	13
21st birthday party	282	0
Research expenditure	129	60
Postage, stationery & telephone	452	501
Library purchases	45	39
Equipment storage	65	0
Equipment maintenance	26	0
Misc. expenses incl. Publicity	709	341
Depreciation	<u>1,000</u>	<u>896</u>
	3,064	2,198
	<u>311</u>	<u>1,516</u>

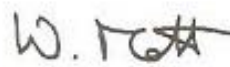
**WEST MIDDLESEX FAMILY HISTORY SOCIETY  
BALANCE SHEET AT 31 DECEMBER 1999**

	<i>Cost or value at <u>30/09/94</u></i>	<i>Accumulated depreciation</i>	<i>Value at 31/12/99</i>	<i>Value at 30/09/98</i>
<b>FIXED ASSETS</b>				
1881 census index	1,087	767	320	426
1891 census	752	435	317	423
Fiche reader/copier	1,800	787	1,013	1,350
Film andFiche viewers	234	189	45	60
Portable fiche viewer	50	21	29	38
Kodak slide projector	315	148	167	185
Projector stand	1	0	1	1
1988 IGI fiche	75	61	14	18
Times divorce index	11	9	2	3
Boxes and display shelves	31	25	6	8
Computer and software	1,009	1,009	0	239
Virus checking software	89	89	0	52
Heavy duty printer	95	72	23	30
Banner for open days	65	65	0	42
Harmondsworth Manor Rolls	348	0	348	348
Exhibition display boards	250	62	188	0
	<u>6,212</u>	<u>3,739</u>	<u>2,473</u>	<u>3,223</u>
 <b>CURRENT ASSETS</b>				
Stocks		888	1,367	
Bookstall		211	277	
Fiche		91	90	
Postal Books		9	38	
Polylopes		0	124	
Publicity material		50	0	
Prepaid expenses		<u>13,989</u>	<u>11,654</u>	
Cash at bank and in hand			15,238	13,550
 <b>CURRENT LIABILITIES</b>				
Subscriptions in advance		2,356	2,053	
Hire of meeting hall, July–December		315	0	
Deposits held		<u>40</u>	<u>31</u>	
			<u>2,711</u>	<u>2,084</u>
			<u>15,000</u>	<u>14,689</u>
 <b>ACCUMULATED FUND</b>				
Balance brought forward			14,689	13,173
Surplus for 15/12 months			<u>311</u>	<u>1,516</u>
			<u>15,000</u>	<u>14,689</u>

We have compared the Receipts and Payments Account and the Balance Sheet with the books and vouchers of the Society and confirm that they are in accordance therewith.



P. Kershaw, Hon Examiner



W. Mott Hon. Examiner



M. Spratt, Hon. Treasurer

### **Family Records Centre**

The Quiet Area in C Section of the Reading Room has become a permanent feature after a successful trial period.

As the 1881 Census CD ROM has not been as widely used as anticipated (probably due to purchase for home use by researchers), it is now available on 3 computers instead of 7 as before. The British Isles Vital Records Index is also available on CD ROM.

A programme is in preparation for refilming the 1851 census. As a result of a survey, filming of the Death Duty Registers (PRO ref. IR 26) has been brought forward.

Registration District Maps (PRO Ref. RG18) are now available with a new guide, and "How to use" leaflets have been revised and colour coded.

Current plans for the 1901 census are that the national collection of fiche will be available at PRO Kew; the PRC will offer access to the Internet service. Local fiche will be offered for sale to County Record Offices and libraries, who will also have the option of access to the on-line service. There will be free access to a basic index (name and place); multiple searches of this index can be done free of charge. Viewing the details for an individual will probably cost about 50p. Beyond this there may be an option for more detailed searches; this has not yet been fully worked out, but it is intended that fees charged should cover the cost of the service.

The latest information on the 1901 project can be found on the PRO website <http://www.pro.gov.uk/census/default.htm>

Due to problems caused by the success of the PRC and increasing interest in Family History, all the censuses may ultimately be digitised.

**Feltham Notes History Group** are staging a Millennium re-enactment of the ancient tradition of Beating the Bounds on Sunday 23 July. Start and finish point at Bedfont Lakes Country Park, Bedfont Road Entrance. Assembly time 9am. Anyone who is interested is invited but you don't have to complete the course: there are joining and leaving points along the boundary with Bedfont, Hanworth and Sunbuiy For further details contact Peter Watson on 020 8890 1017 (evenings), Roger on 020 8570 7181 (evenings) or Vera 020 8844 1802 (daytime).

## **London Metropolitan Archives**

The LMA has acquired the Parish Registers of St Mary Hampton from 1554 and Holy Trinity and St Paul, Hounslow, 1874-1990. 'While these records are being catalogued, 48 hours' notice is required to view them.

## **Public Record Office**

A2A, a consortium of the PRO, British Library and the Royal Commission on Historical Manuscripts (HMC) has been awarded the total amount of a bid for funding to put 400,000 pages of catalogues of records of national, regional and local importance dating from the 12th—20th centuries held in local archives (160 repositories will be taking part) in England onto the World Wide Web. The new network will give access to archive services in electronic form to people in their own homes, offices and schools both in the UK and Overseas.

**Westminster City Archives** are offering a Millennium Lecture series, as follows:

<i>Origins of the City of Westminster</i>	Wednesday 7 June, 7-8pm, £5
<i>Westminster in the 16th Century</i>	Wednesday 14 June, 7-8pm, £5
<i>Westminster in the 17th Century</i>	Wednesday 21 June, 7-8pm, £5
<i>Westminster in the 18th Century</i>	Wednesday 28 June, 7-8pm, £5
<i>Westminster in the 19th Century</i>	Wednesday 5 July, 7-8pm, £5
<i>Westminster in the 20th Century</i>	Wednesday 12 July, 7-8pm, £5

Places, which are limited, should be booked in advance. *City of Westminster Archives Centre, 10 St Ann's Street, London SW1P 2DE, tel. 020 7641 5180*

## **Diary Dates 2000**

**Saturday 3 June:** PRO Open Day: A Tudor Revel. Exhibition of original documents and artefacts, costumed interpreters, music and food workshops, tours and talks. 10-4pm. Admission free

**Monday to Thursday 5-8 June:** *Tudor Times Week* at the PRO: exhibition and evening lectures (6.30pm, tickets £5) exploring characters and events of Tudor England.

**Friday 16 June:** *Become your own house detective:* document workshop at the PRO with Nick Barratt of PRO/ BBC. 1pm. Admission free

**Friday and Saturday 23-24 June:** *Histories of the Millennium* Conference at the PRO, in association with the Family and Community Historical Society of the Open University: community, social, local and family history. Talks by PRO staff and outside speakers plus exhibition. £60, conc. £40 (two days),

£35, conc. £25 (one day) includes lunch and refreshments. Further details and booking form: tel.020 8392 5323, e-mail: events@pro.gov.uk

**Saturday and Sunday 24-25 June:** Middlesex County Show, Showground Park St, Uxbridge.

**Saturday 22 July:** Buckinghamshire Family History Society Open Day, 10am to 4pm at Aylesbury Grammar School, Walton Road, Aylesbury (southeast of the town between the A413 and A41) . Full Bucks FHS library, Bucks county records and local studies service, Computer Group demos, guest societies. etc. Free admission and car parking. Refreshments.

**Sunday 6 August:** Hillingdon Family History Society Open Day, Great Barn, Bury Street, Ruislip, Middlesex. 10am - 4pm. Adults £1, children free.

**Saturday 4 November:** West Surrey Family History Society Open Day-cum- Family History Fair, 'Woking Leisure Centre, Kingfield Road, Woking, Surrey. Details from: *Mrs S. McQuire, Deer Dell, Botany Hill, The Sands, Farnham, Surrey GU10 1LZ (please enclose SAE).*

### **W.M.F.H.S News**

We are sorry to report the death of Robert Chandler, one of our Honorary Life Members. Robert was our treasurer from 1985 to 1989. Shortly after this he and his wife went to live in Dormston in Worcestershire. He still retained strong links with our Society and for many years ran our microfiche postal service. Robert was always a perfect gentleman and this is how he will be remembered by his many friends in the Society.

### **Certificate Courier Service**

The charge for this service is:

£8.00 per certificate. FULL reference must be supplied. Please quote all the details given in the index (i.e. name, year, quarter, district, volume and page). I do check the reference you have supplied and appreciate that sometimes the page numbers are difficult to read from fiche: they are sometimes difficult to read in the original!

Unwanted certificates and/or copies of certificates which are still wanted are always welcome. These are put on our database, which is growing with your help.

When applying, please quote your membership number and make your cheque payable to me (not WMFHS); all payments must be in Sterling. SAEs appreciated.

*Valerie J. Walker (Miss), 32 Cunnington Street, Chiswick, London W4 5EN*

---

## HIGH BRIDGE AND RAVENSCOURT ROWING CLUBS

*Jacqueline Finesilver*

---

These clubs seem to have had a brief but vigorous existence: the High Bridge Rowing Club was founded in 1902 and the Ravenscourt RC in 1903. Both grew rapidly but I have found no reference to Ravenscourt after 1905, and High Bridge seems to have died at the onset of the Great War.

I became interested because my father had a newspaper clipping (anonymous, undated) and a medal. The clipping bore an account of the annual dinner and presentation of prizes of the High Bridge Rowing Club in which my grandfather **Joseph CORIO** was mentioned several times. The handsome and ornate medal, which had belonged to him, had been presented for a race in the 1908 Tradesmen's Rowing Club Association Regatta.

I spoke to helpful people at the Thames Tradesmen's Rowing Club and the River and Rowing Museum but no-one had heard of my grandfather's club. Unfortunately many records and papers have been lost one way or another.

Back issues of the *West London Observer* seemed a likely place to try next, and the staff of the Hammersmith and Fulham Archives showed me the filing cabinet full of little spools and how to use the microfilm reader/printer. Before long I struck gold on the sports page (page two), March 27, 1908 - the page of our clipping. From there I trawled backwards and forwards through the weeks and years and found quite a number of references to High Bridge RC and to Joe Corio. I found that he and some of his fellow High Bridge members had also rowed for Ravenscourt RC. The two clubs seem not only to have been mutually supportive but to have had some doubling up of members.

At this time we solved the mystery of the bridge. My father, though he grew up in the Lower Mall, Hammersmith, area, had never heard of a High Bridge, though he had referred to the 'wooden bridge' which used to span the Creek between Lower and Upper Mall before it was culverted. When old maps of the Lower Mall area were produced from the archive strongroom he was surprised to discover that his 'wooden bridge' and High Bridge were one and the same.

Although they had folders of information on High Bridge, the Creek (where my father swam as a boy, at great risk to his health) and other rowing clubs, the archives staff thought that they had nothing on our special interest. But this luckily was not the case. While rummaging through a folder I struck gold

Again! There was a large photograph of the HBRC members, three rows of them, all looking fit and stalwart in their working men's singlets, flanked by local businessmen and patrons, and with an array of trophies before them. The photograph was taken in Mall Road. It was attached to a brief letter from the person who had deposited it (L.R. PATON of Lilian Road, Barnes), and to a diagram in which names are attached to a few of the bodies. In fact, although my grandfather is one of those named, his son disputes the validity of the identification!

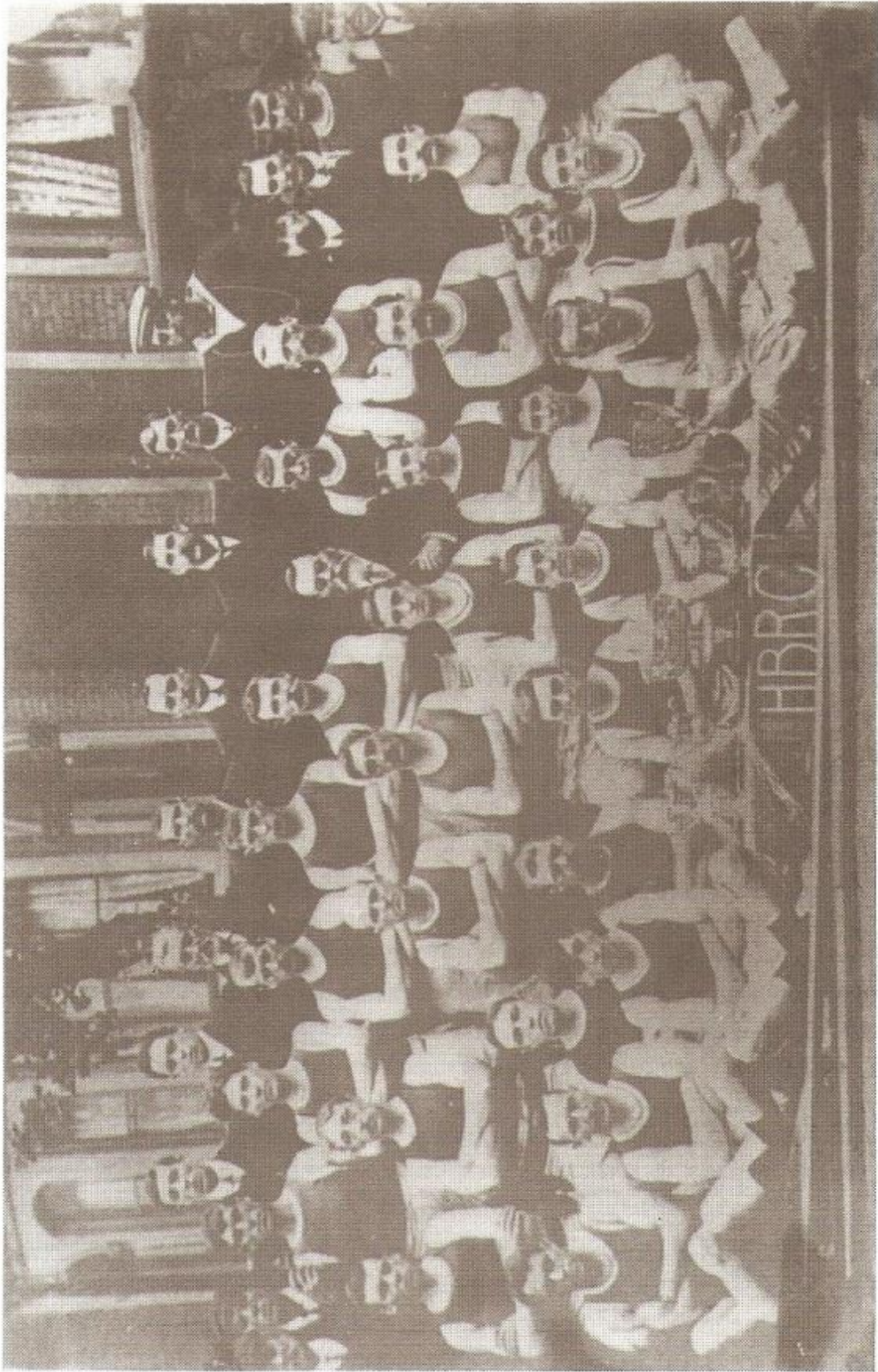
Joseph Corio and his friends were manual workers (but by no means 'menial'), enthusiastic enough to turn up at Biffen's boathouse for training and events after a hard day's work. At the HBRC First Annual Dinner the Chairman said that he thought there was room in Hammersmith for a rowing club "where young men could unite together and go in for a fair and honest race with no professionalism about it, and so no tossing up to see who was going to win (*laughter*). If they wanted to see a good race they had an opportunity when working men rowed to win, and victory rested with the strongest crew" (*West London Observer* 15 May 1903). Five years later they were certainly rowing to win: 1908 was a particularly successful season for HBRC. The report for 19 February 1908 states that the club set a record by winning the TRCA's four Challenge Cups and 24 gold medals.

The clubs appear to have been social as well as sporting. One of the social aspects was obvious - High Bridge RC had its headquarters at the Coachmakers Arms, and later at the Blue Anchor, while Ravenscourt RC favoured the Plough and Harrow. One of the sporting aims was that of coaching local lads. The honorary secretary of Ravenscourt RC once said that "The object of the club was to try to bring on the younger members who could not row, and there were some present who could now take prizes, who when they joined the club did not know how to use the oars" (*West London Observer* 29 January 1904).

My father would have made the most of this opportunity. As it was, he and his friends had to tutor themselves when they were old enough. Quite frequently more than one family member did row for the clubs - certain surnames crop up with a variety of initials: COLE, CRANMER and CROUCH, JACKSON, JAMES and PERROTON, to name but a handful. Had it survived the war, I am sure **Sidney CORIO** would have followed his father into the club.

So, I have a chronology of club events recorded in the newspaper from 1903 to 1913, although after about 1908 football began to muscle other events off





*High Bridge Rowing Club*

*Hammersmith & Fulham Local History Archives*

the sports pages. I have photocopies and typescripts of some of the races and prizegivings, and I've compiled a list of rowers mentioned in the newspaper accounts. Any further information would be most welcome.

*Mrs Jacqueline Finesilver, 6a Welbeck Close, Finchley, London N12 9TU*

### **References**

Thames Tradesmen's Rowing Club  
Boathouse, Dukes Meadows, Chiswick, London W4 2SH  
Tel. 020 8994 8612

River and Rowing Museum  
Mill Meadows, Henley on Thames RG9 1BF  
Tel. 01491 415 600

(Has library and archives)

Hammersmith and Fulham Archives St Local History Centre  
The Lilla Huset, 191 Talgarth Road, London W6 SBJ  
Tel. 020 87415159

---

## **NON-CONFORMIST RECORDS AT THE PUBLIC RECORD OFFICE**

---

Two non-conformist "central" registries were set up in London in the 18th and 19th centuries to provide legally acceptable records of birth. Many thousands of births were recorded in these registers, which are held at Kew.

The Protestant Dissenters' Registry at Dr Williams' Library (originally in Redcross Street, use of the library being restricted initially under Dr Williams' will to dissenters) was founded in 1742, serving the Congregations of Baptists, Independents and Presbyterians in London and within a 12-mile radius of London. However, parents from most parts of the British Isles and even abroad used the Registry - almost 50,000 births were recorded (in fact retrospective entries go back to 1716). The Registry continued until 1837 (RG4-4658-4665; indexes at RG4-4666-4676). The original certificates used to compile the Registers also survive (RG5/1-161, same Index as the Registers).

Parents wishing to register a birth had to produce two parchment certificates signed by their Minister and by the midwife and one or two other people present at the birth, giving the name and sex of the child, the name of the parents, the name of the mother's father and the date and place (street, parish, city) of birth. After 1828 paper certificates were required instead

which had to be signed by the parents as well; this made them more acceptable as legal proof of birth. On receipt of the two certificates, all the details except the address of the birth were entered in the Register, one of the certificates was filed (RG5) and the other given back to the parents with the certificate of registration.

The Wesleyan Methodist Registry, founded in 1818 at 66 Paternoster Row, registered over 10,000 children from England, Wales and elsewhere until 1838, some retrospective entries going back to 1773 (RG4677-4679, Index at RG4/4680). One of the two certificates submitted by the parents was entered in the Register and filed (RG 5/162-Z07, also indexed in RG4/4680); the other was returned to the parents. The certificates and the Register entry have name and sex of child, name and address of father, name of mother and of both her parents, date and place of birth, name of the particular Wesleyan Circuit, signatures of parents, witnesses to the birth and the baptising Minister.

**PRO Reference numbers for Non-Conformist records:**

Authenticated Registers	RG4
Birth Certificates (in Records of Dr Williams Library & Wesleyan Metropolitan Registry)	RG5
Index(1663)	SP9
Marriage Registrations	RG42
Preaching Licences	SP29-SP30, SP44
Fines for Recusancy	E376-E477
Registers of Places of Worship	RG31

**Hang on - your name's familiar**

Museum curator Jane Vincent, of Codicote, Heits, while talking with a fellow guest at a dinner party, discovered that his great great grandfather had *murdered* her great great grandfather. Jane and antiques dealer Colin Rush, of Eastbourne, Sussex, had no idea of the link when they were invited to the dinner party by a mutual friend. Colin told her he had been researching the life of his ancestor James Rush, the last man to be hanged at Norwich Castle, 21st April, 1849. Jane replied that she already knew about it - because one of Rush's two victims was her great great grandfather Isaac Jermy, the Recorder of Norwich. Jane and Colin agreed to let bygones be bygones.

From: *The Mirror*, 22.4.99

## SOCIETY PUBLICATIONS ON MICROFICHE

### Monumental Inscriptions

The following transcriptions of monumental inscriptions for churchyards in the West Middlesex area are available.

	U.K.	Overseas
St Nicholas, Shepperton	£2.35	£3.00
St Mary Magdalene, Littleton	£1.35	£1.75
St Mary the Virgin, Bedfont	£1.35	£1.75
St Mary the Virgin, Harmondsworth	£2.35	£3.00
All Saints, Isleworth	£2.35	£3.00
All Saints, Laleham	£2.35	£3.00
All six sets of fiche	£9.50	£11.00

### Surname Indexes to the 1851 Census

<b>Paddington (HO 107 / 1466-1467)</b> <i>Set of two microfiche.</i>	£2.35	£3.00
<b>Kensington, Brompton, Hammersmith &amp; Fulham (HO 107/1468-1471)</b> <i>Four microfiche. These, together with the two for Paddington (above) cover the whole of the Kensington RD</i>	£4.35	£5.20
<b>Chelsea (HO 107 / 1472-1474)</b> <i>Three fiche. Covers the parish of St Luke, Chelsea</i>	£3.35	£4.00
<b>Brentford Registration District (HO 107/1698-1699) with Hampton Sub-District (HO 107 1604 (part))</b> <i>Three fiche. Includes the parishes of Heston, Isleworth, Twickenham, Hampton, Teddington, Acton, Brentford, Ealing, Hanwell, Greenford, Perivale and Chiswick</i>	£2.85	£3.50
<b>Uxbridge (HO 107/1697)</b> <i>Two fiche. A complete index to the surnames, Christian names and ages for the Uxbridge RD which covered the parishes of Cowley, Hayes, Harefield, Hillingdon, Ickenham, Northolt, Norwood, Ruislip and Uxbridge</i>	£2.35	£3.00
<b>Staines (HO 107/1696)</b> <i>Two fiche. A complete index to the surnames, Christian names and ages for the Staines RD which covered the parishes of Ashford, Cranford, East Bedfont, Feltham, Hanworth, Harlington, Harmondsworth, Laleham, Littleton, Shepperton, Stanwell, Staines and Sunbury</i>	£2.35	£3.00

### Indexes to the 1891 Census

<b>Hampton (RG 12/616-618)</b> <i>Two fiche. Index of surnames, Christian names and ages for Hampton, Hampton Wick and Teddington, which comprise the Hampton sub-district of the Kingston RD</i>	£2.35	£3.00
--	-------	-------

All prices above include postage. Please indicate the number of each that you require, and send your order with your name, address and payment (sterling only, cheques payable to West Middlesex Family History Society) to:

Mrs. M.M. Harris, "Stone Lea", Mellors Lane, Holbrook, Derbyshire DE56 0SY

## DIRECTORY OF MEMBERS' INTERESTS 2000

The Committee have decided to issue a new edition of the West Middlesex Family History Society Directory of Members' Interests as a means of promoting the exchange of family history information amongst members.

Information for inclusion in the Directory should be submitted using the form provided in the centre of this issue of the journal. A microfiche containing the Directory will be issued free with the journal later this year. The layout of the Directory will be the same as that used in previous editions, a simple surname-period-area scheme, as is used regularly in the journal for the interests of new members.

The Directory will include a full listing of the names and addresses of those members who return the forms, plus their surname interests. Members who have recently joined the Society should take note that the surname interests in the Directory will be based only on information returned in the form provided; interests submitted when a member joins the Society are published on a once-only basis. Hence if you wish your interests to be included in the 2000 Directory you must complete the form and return it.

The Directory will be produced in microfiche format. Members are reminded that many public libraries and record offices have fiche readers and will allow members to read or print from their own fiche.

**To be certain of having your interests included in the Directory, you should return the form by 31st July 2000 at the latest.**

Before filling in the form, please read the following instructions carefully. If there should remain any points about which you are uncertain or which require further explanation, please use the space provided on the reverse of the form.

### **Filling in the form**

Please take a few moments to read the following before filling in the form:

#### **General**

- Please complete all parts of the form in **BLOCK CAPITALS**
- Include your membership number where indicated; if you receive your journal by post, you will find your number on the address label.
- The form contains space for a maximum of fifteen surnames per member. Any additional names entered will not be included in the Directory

- Please complete all four columns for each surname interest, i.e. surname, period, area, county. Each line should be complete and self-contained. Please do not use ditto marks. Incomplete lines will not be included in the Directory.
- If you are interested in all occurrences of a surname, you may enter 'ALL' or 'ANY' in any of the second, third or fourth columns.

### **Surname**

- Please enter surnames only in the first column, not the full names of particular individuals
- Spelling variants: it is assumed that a member using the Directory will check for likely spelling variants him/herself. If necessary, however, a single spelling variant only of a particular surname may be included in the surname column.

### **Period**

- Indicate the period for which you are interested in the surname in the specified area. This should be in one of the following formats: 1820-90; circa 1740; before 1800; after 1850,; 19C; 17-18C
- Please do not abbreviate further, or use alternatives

### **Area**

- Enter one town or parish only. If you are interested in a wider area, please indicate this by, for example, 'Kensington area'

### **County**

Enter one English, Welsh, Scottish or Irish county, using the Chapman county codes if possible. Overseas interests should be noted in full.

#### **If only they were all like this!**

Richard Cator, the sonne of John Cater and Jane his Wyfe Dwelling in the house that Creake, late Clarcke of this parish, Dwelt in, was baptized the xxviiij day of februarie 1584. And had to godfathers Mr Roger Abbye marchant tayller of the parish of Allhallows in Bread street. And Mr Richard Veale of the parish of St Brides in fleet street, and Mrs Selby, of the parish of St Buttulph W'out Aldersgate being the Wyfe of Selby.

From: the Parish Register of All Hallows London Wall. Found by Wendy Mott, who sighs: "Oh to find an entry like this for *our* Families"

## THE SEARCH FOR JAMES JOSEPH WOODWARD AND RICHARD BOND

*Pam Sim*

My great grandfather **George Joseph WOODWARD** was born on 13th May 1850 and his birth was registered by his mother, **Eliza WOODWARD**, formerly **BOND**, on 11th June at Hillingdon, Uxbridge. The father was **James WOODWARD**, Coachman, and their address was Goulds Green, Hillingdon. On the marriage certificate of **George Joseph** and **Eliza Ann SEARS** in 1876 the groom's father's name was given as **James Richard WOODWARD**, occupation Coachman once again.

We obtained the marriage certificate of great grandfather's parents **James WOODWARD** and **Eliza BOND**. The wedding took place at Paddington Parish Church on 2nd December, 1847. James was a Coachman, as was his father, **Joseph WOODWARD**.

On the 1851 census for Hillingdon we found James and Eliza and two children George who was ten months old, and an older Child James who was two years old. The birthplaces of Eliza and James Senior were given as Hanwell, Mx. We therefore searched the parish registers of St Mary's Hanwell and found a family of **Joseph** and **Elizabeth WOODWARD**. The children were:

<b>John</b>	bp 23 Mar 1817
<b>Ann</b>	bp 14 Mar 1819
<b>James Joseph</b>	bp 2 Oct 1824
<b>George Thomas</b>	bp 15 Nov 1827
<b>Henry</b>	bp 8 Dec 1833
<b>Elizabeth</b>	bp 7 Mar 1836

We searched the baptisms from 1813-1864 but failed to find any other likely families. We then looked at marriages between 1813 and 1837 and found the marriage of: **Joseph WOODWARD** Bachelor and **Elizabeth WARD** Spinster, 3rd December 1815. We were then left wondering if James Joseph was the same person as James Richard, and if one of the entries was in error. At Uxbridge Library we found in the 1861 census index:

RG 9/767 p39 Goulds Green, Hillingdon

<b>Eliza WOODWARD</b>	Hd	W 36	Monthly nurse	born Bedfont, Mx
<b>George</b>		s 10	Scholar	born Hillingdon
<b>Alfred</b>		s 8	"	"
<b>Sarah</b>		d 5	"	"

And in the 1871 census index for Cowley:

<b>Eliza WOODWARD</b>	W 45	Nurse	born Hillingdon
<b>Alfred</b>	s 18	Scholar	“
<b>Henry</b>	s 10 months		“

So from these indexes we had been able to identify three more children: **Alfred**, born circa 1853, **Sarah**, born circa 1856 and **Henry**, born circa 1861. We also see **Eliza** described as Head of the house and a widow, so **James Joseph** died pre-1861.

We obtained the birth certificates of **James Richard** born 13th May 1848, **Alfred** born 30th August 1852, **Sarah** born 7th July 1855 and **Henry** born 6th June 1870 (Henry was indeed born to Eliza when she was 44, and no father's name is entered on the certificate). Fortunately Sarah's birth was notified by her father, who gave his full names as **James Joseph!**

Having got that little mystery out of the way, we did some research on Eliza Bond's father **Richard**. Our first knowledge of him was on the marriage certificate of his daughter Eliza and James Woodward. She said that her father, Richard, was a farmer, but as is often the way she was stretching the truth and in reality it seems that, like many of our ancestors, he was an agricultural labourer. Eliza's place of birth was given in 1851 as Hanwell but the 1861 and 1871 censuses give it as Hillingdon. We initially searched the 1841 census for the Hillingdon area for any sign of the Bond family. At Little Britain in Hillingdon (ref. HO 107/656 p4) a family was found:

<b>Richard Bond</b>	45	Yes (born in county)
<b>Hannah</b>	40	Yes
<b>Thomas</b>	10	Yes
<b>Richard</b>	5	Yes
<b>Martha</b>	4	Yes

There was no Eliza, but at High Street Uxbridge, in **William GOODMAN's** household, there was a servant called Eliza Bond who was aged 15 years and had been born in Middlesex. Later censuses suggested that Eliza was born about 1824-26, so it tallied well. As her birthplace is given in the 1851 census for Goulds Green as Bedfont, at the London Metropolitan Archives we looked at the film (ref X77/71) of the baptisms at St Mary the Virgin, East Bedfont, between 1813 and 1839 and found on 19th September 1824: **Eliza Boddy**, daughter of **Richard** and **Hannah BOND**, abode Hatton, and on checking the marriage entries for the same period: 2nd October 1816 Richard Bond, bachelor and Hannah Bond, spinster, witnesses: **Sally BOND, James BOND, Joseph SANDERS.**



The next step was to check other parish registers in the areas where we knew the Bond family had been living, and in fact several children had been baptised at St John the Baptist Church, Hillingdon. First came Mary Frances, baptised 23rd November 1817, daughter of Richard (Labourer) and Anna (sic) Bond. Then came Sarah on 2nd May 1819, followed by John on 9th September 1827. This time the mother's name was given as Hannah. No further baptism entries have been found but the 1851 and 1861 censuses for Little Britain suggest that George was born about 1841 or 1842, apparently completing the family. On the 1851 census Richard is entered as "Robert" but all the other family details are so similar that I feel this must be an error.

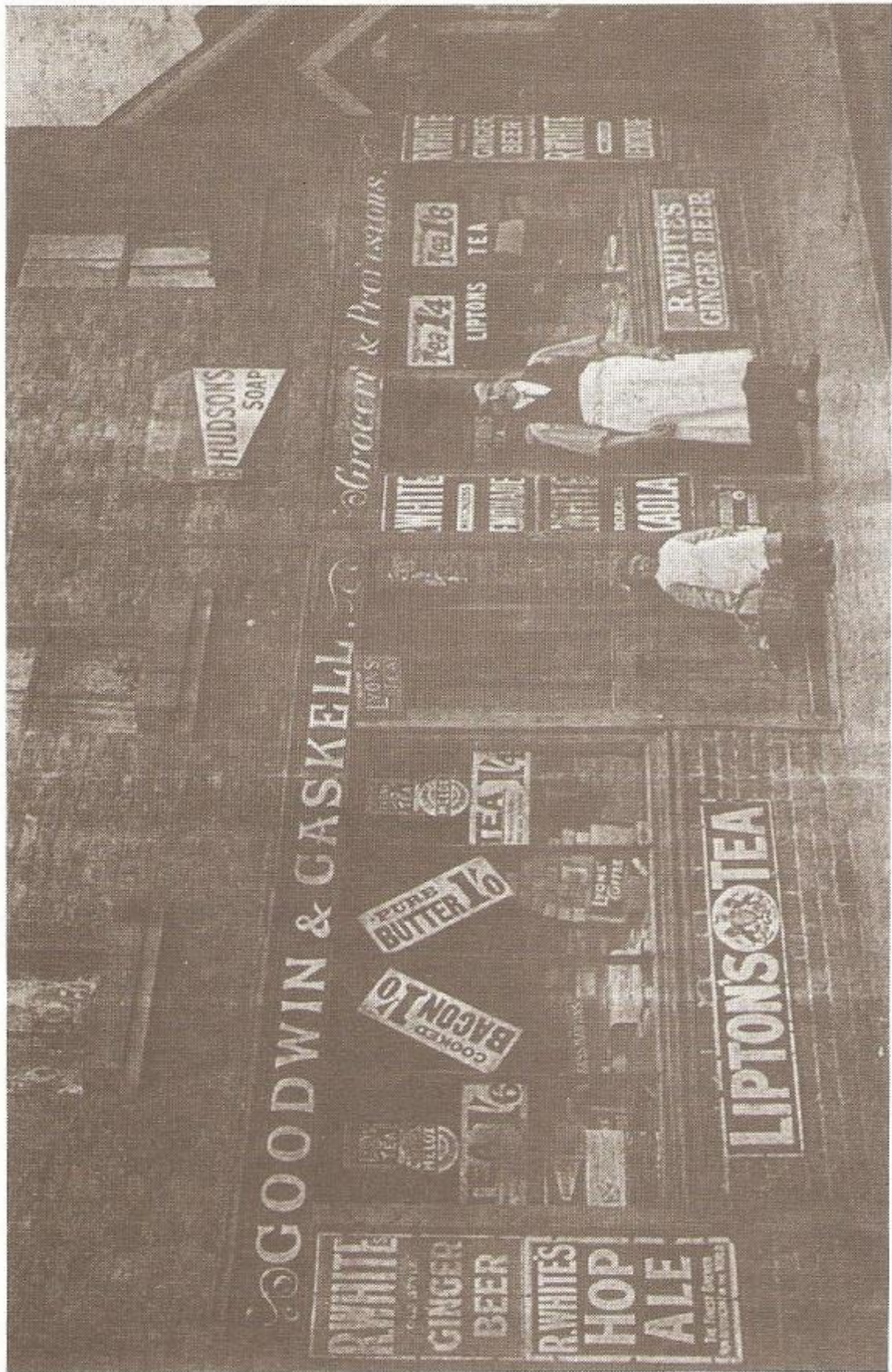
Now of course we wanted to find out who Richard's parents had been. Further searching of St John the Baptist Hillingdon parish registers revealed two Bond families: Thomas and Sarah and Joseph and Ann. Joseph and Ann Bond had the following children baptised at St John the Baptist Hillingdon:

<b>Joseph and Ann</b>		<b>Thomas and Sarah</b>	
<b>Samuel</b>	27 Jul 1788	<b>George</b>	27 May 1781
<b>Margaret</b>	2 Jan 1791	<b>Elizabeth</b>	11 Apr 1784
<b>Eliza</b>	10 Feb 1793	<b>William</b>	7 Jan 1787
<b>Richard</b>	19 Jun 1795	<b>Thomas</b>	19 Apr 1789
<b>Dinah</b>	19 Nov 1797	<b>Sally</b>	27 Nov 1791
<b>James</b>	2 Oct 1803	<b>Richard Howard</b>	7 Jul 1793
		<b>James</b>	6 Sep 1795

These two Richards were baptised only two years apart so it was going to be important to try and identify "ours". In the 1851 census Richard's age was given as 57 years, which seemed quite precise, rather than being rounded up, and that gave a date of birth of 1793 to 1794. It seemed more likely that the witnesses at his wedding, who were Sally and James Bond, were his brother and sister rather than his cousins, especially as James, son of Joseph and Ann, would only have been 13 years old at the time, whereas Thomas and Sarah's James would have been twenty-one. The burial of a Richard Bond at Hillingdon on 16th January 1820 gave the young man's age as 24 years, which tied in better with the younger Richard, baptised in 1795.

Fortunately we managed to find the death certificate of "our" Richard Bond, whom we knew had died after the 1861 but before the 1871 census. His full name of Richard Howard Bond was given, thus confirming our deductions!

*Pam Sim, Fairlight, Playstreet Lane, Ryde, I.O.W. PO33 3LJ*



*Edith Gaskell and Edward Gaskell outside the shop (at ? 1 Nelson Road, Whitton) c. 1910. (See Help!)*

---

## HELP!

---

This service is free to members of WMFHS (please quote your membership number when writing). In order to ensure that your appeal is published correctly and is clear to other readers, please make entries clear and concise, give all personal and place names in BLOCK CAPITALS, and all dates in full. Entries from non-members can be accepted, at a rate of £3.00 for up to ten lines. Payments must be in Sterling only, with cheques made payable to WMFHS.

### **CRAFTS/CROFTS/MOORE/MORE**

Searching for information on RICHARD CRAFT(S)/CROFT(S) m. SOPHIA? Children born between 1792-1804, all baptised All Saints FULHAM. Also one child of this couple THOMAS CRAFT (baptised 4.12.1796) married MARY ANN MOORE/MORE (baptised 23.5.1801 All Saints FULHAM). They had twelve children between 1821-1847, baptised St Luke CHELSEA from 1839. They lived in Allington Street, PIMLICO. Cannot find Thomas Craft and Mary Ann Moore's marriage details. Any information very welcome.

*Ms Joan Craft, Via R. de Cesari 87, Bulgarno, 47024 Cessna, (FO) Italy*

### **GOODWIN/GASKELL**

I have two photos of a double-fronted grocer's shop GOODWIN Sr GASKELL (see illustration). EDWARD GASKELL's army discharge in 1909, witnessed by Mr GOODWIN, is to a grocer's shop at 1 NELSON ROAD, WHITTON. A modern community centre is now on that site. Is anyone able to confirm that this shop was at the end of NELSON ROAD or have any knowledge of when it was demolished? By 1914 the GASKELL family were living in lodgings in HACKNEY so it would appear to have been an unsuccessful venture. EDWARD and SARAH GASKELL were my husband's grandparents. I do not know who Mr GOODWIN is. Any information would be most welcome.

*Annett Legg, 57 Croft Avenue, West Wickham, Kent BR4 0QH*

### **HOPGOOD/NICKLESS**

Seeking information on THOMAS HOPGOOD who gave his birthplace as NORWOOD PRECINCT. He married SARAH NICKLESS on 23rd November 1823 in HANWELL Parish Church and lived in SOUTHALL with his family of JAMES, WILLIAM, HARRIET, MARY: JOHN, CHARLES and HENRY.

*Mrs Audrey Binstead, PO. Box 79, Matakana 1240, Lower Northland, New Zealand, e-mail: aud.binsted@xtra.co.nz*

### **HOUNSLOW & DISTRICT FOOTBALL LEAGUE**

I have a silver and enamelled medal awarded to my father which has a crown surmounting a round body with Hounslow and District Football League around the Middlesex escutcheon. The reverse is inscribed with "DIV 2 1923-4". It was made by Thomas Fattorin, Kockley Street, Birmingham, Ltd. and has the maker's mark TF and assay marks. Can anyone tell me more about this Football League? My father was SIDNEY CYRIL POOLE, born 1905 STAINES where he lived until 1969 when he moved to Chipping Norton.

*Dr C.A. Snodgrass, 15 Moor Lane, Darras Hall, Ponteland, Newcastle-upon-Tyne NE20 9AD*

### **PORTER**

Help required in tracing the family of WILLIAM PORTER, born 3rd May 1807/1808. Embarkation papers dated May 1826, when he left to serve in the Army of the East India Company, give his birthplace as TWICKENHAM. His father's Forename was JAMES, he had an uncle WILLIAM and brothers JAMES, RICHARD, JOHN and a sister SUSANNA. No trace found of family in baptism or marriage indexes for St Mary the Virgin held by Twickenham Local Studies Library. Content of letters suggests a strong 'fire and brimstone' approach to religion perhaps indicating a non-conformist background. By 1828 the Family were living in and around the STRAND area of LONDON.

*Ted Finley, 10 The Charne, Otford, Sevenoaks, Kent TN14 5LS*

### **TAYLOR**

THOMAS TAYLOR, born 8th March 1796 was baptised 28th May 1796 at ST GEORGES HANOVER SQUARE son of THOMAS TAYLOR and SUSANNAH nee WOOD, who were married 16th June 1793, St Georges Hanover Square. On 6th March 1804 aged 8 he was admitted to the St Georges Workhouse in PULHAM ROAD. Where did he spend his first eight years? Also any information on EDWARD SHUTE TAYLOR, THOMAS MAZCARE TAYLOR and any connection with 9 NEW BRIDGE STREET, BLACKFRIARS in 1740s-1800?

*Mrs K Campbell, 4 Conyers Avenue, Birkdale, Southport PR8 4SZ*

### **HELP OFFERED**

To anyone researching the PARNHAM surname: we have a large database of

Parnhams, many in family trees dating back to the 1500s, and will gladly share this information. The vast majority of the early Parnhams seem to have originated in the Vale of Belvoir villages.

*Carol Beadle, 5 Marshall Hill Drive, Mapperley, Notts NG3 6FY*

---

## BOOKSHELF

---

The following publications are available from the Federation of Family History Societies:

**An Approach to Keeping your Family Records** *by Iain Swinnerton*

How to organise and structure family records for posterity, from filing notes to card indexing to computer software; from identifying family members to drawing up family trees; from storing photographs to preserving family documents and artefacts.

*ISBN 1 86006101X 1999 £1.95 (UK) Overseas: Surface £2.25, Air £2.85*

**An Approach to Contacting Relatives** *by Peter C. Arrisden*

Making contact with living relatives is sometimes more difficult than finding out about ancestors. Methods, initial approaches and possible pitfalls are explored, with among other ideas the use of directories, public records and the Internet.

*ISBN 1 86006 099 4 1999 £1.95 (UK) Overseas: Surface £2.25, Air £2.85*

**Using Death and Burial Records for Family Historians** *by Lilian Gibbens*

The how and where to access many records associated with death and burial plus useful historical information on associated people, customs and rituals. Addresses and extensive bibliography included.

*ISBN 1 86006102 8 1999 £1.95 (UK) Overseas: Surface £2.25, Air £2.85*

**Internet for Genealogy** *by David Hawgood*

A practical guide showing what family historians can obtain from the Internet, with examples and addresses. Among other features explored are: how to find your way, use e-mail, access conferences and newsgroups, surname search and publish your own information.

*ISBN 0 948151 196 1999 £2.15 (UK) Overseas: Surface £2.35, Air £2.85*

The above publications are available from FFHS Publications, 2-4 Killer Street, Ramsbottom, Bury, Lancs BL0 9BZ. Cheques should be made out to 'FFHS Publications'.

## TWENTIETH WEST LONDON LOCAL HISTORY CONFERENCE 2000 YEARS OF WEST LONDON HISTORY

This year's conference was held as in previous years at Montague Hall, Montague Road, Hounslow, on 18th March. John Cotton, Curator of Prehistory in the Early London History Department at the Museum of London, who began the proceedings with a talk on the prehistory of West London, raised the question: what do people tend to understand by prehistory? In a Straw Poll taken at the Museum 2000 people were asked what pre-history meant to them: 30% said 'Dinosaurs', or 'The Flintstones', or 'The period before written records'. For a lot of people, London's story starts with the Romans, but this ignores 400,000 years of history in the Thames Valley, which was inhabited by individuals, sentient beings, and there is a need to think of them as real people, to 'put flesh on the bones'.

An example of this is work carried out on a pot found at Mortlake with a pattern of deep depressions: impressions of the holes taken by Police experts revealed they were made by a slim finger with a long fingernail, perhaps a woman's. Archaeological evidence shows that people have lived in Middlesex for thousands of years: a stone handaxe found at Sipson, if correctly dated, would be c. 50,000 years old.

Throughout history the Thames has been an artery: a boat some 25 metres long found at Dover was capable of crossing the Channel, and this sort of vessel probably plied the Thames in the Bronze Age. The river was also a boundary which had to be crossed from one territory to another: the well-known monument at Brentford records the tradition of Caesar's crossing of the river in the area. That the Thames was a 'sacred stream' to communities living alongside is suggested by the large number of objects - some of which would have been of great value in their time - dredged from its waters between Kingston and Vauxhall. Some of the weapons found might have been cast into the water during warriors' funerals, or a community leader might have shown his wealth by throwing a precious object into the river. Where were these objects being made and where did the communities live?

Gravel extraction in West Middlesex has led to discoveries being made, in turn leading to excavations, for example at Perry Oaks, near Heathrow. Features also show up on old maps: John Rocque's mid 18th century map of Harmondsworth parish shows a feature called Shakesbury Hill, an ancient earthwork which was originally part of a group of at least two earthworks and

two barrows. The Parish boundary still follows the line of the barrows and earthworks, but in an early 19th century enclosure map the southerly earthwork has already disappeared. Placename evidence suggests that “Shakesbury Hill” might by early medieval times have been a robbers’ camp; perhaps Hounslow Heath already had a dubious reputation.

Other structures in the area have revealed possible round houses and a temple, and a 2½ mile ‘ceremonial avenue’ found near Runnymede is possibly part of a neolithic ritual landscape, later to be covered over by fields in the Bronze Age. From 1,000BC defended enclosures overlying field systems point to a new need to defend the land, e.g. the double-ditch enclosure at Mayfield Farm, south of Heathrow.

Rita Ensing of Wandsworth Historical Society gave a well-researched talk on Downe and Allfarthing Manors, Wandsworth, which in medieval times formed part of the lands belonging to Westminster Abbey. “Downe” refers to the steep hill at one side of the river Wandle, but the origin of the name Allfarthing is obscure. Downe Manor was South, Allfarthing South West of the High Street. Rita described the strip system of farming used on manors in the late 14th century, and the kinds of wages paid to the farmworkers: a plowman or carter earned 13/4d a year, a shepherd 10/ a year.

Although by this period money rents had replaced some of the old feudal obligations, tenants were still obliged to put their sheep on the Lord’s land after the harvest (for fertilising) so sheep farming was an important source of income for the two Manors. Mixed crops were grown on the strips: oats were the main crop; wheat and rye required the best land. Surviving rental lists give the names of some of the tenants.

The Abbey also administered the two churches of Battersea and Wandsworth. The Vicar was entitled to the ‘small tythes’, e.g. straw, and the ‘great tythes’, e.g. crops, went to the Abbey; the great tythe barn stood opposite the end of Putney Bridge Road. Osiers from beside the Thames were also sold for income and mills, in place by 1560, were leased separately. Although there was not much timber in the area, woodland was managed for such commodities as firewood.

At the foot of St Anne’s Hill off the High Street, possibly on Allfarthing Manor itself, was a tile kiln which probably produced some 90,000 tiles a year: a large barn roof needed some 20,000 tiles.

Monks from Westminster were sent to rural Wandsworth for recuperative ‘holidays’. The two manors ceased to be Westminster Abbey land at the

dissolution of the monasteries, but as some of the former monks became the Dean and Chapter of the Abbey many of the “muniments” (documents) relating to the manors were kept.

**Miranda Poliakoff, Curator of Fulham Palace Museum**, next gave a talk on the Palace, revealing that a lot of the pieces of the ‘jigsaw’ of its history, especially during the turbulent 16th and 17th centuries, are missing. There may have been some sort of settlement on the site from Neolithic times: the nearness of the river would have made for convenient access.

From 704AD the Bishop of London was Lord of the Manor of Fulham, which then extended as far as Acton; land south of the river was owned by the Archbishop of Canterbury. Much of the present palace, e.g. the West Courtyard, was the product of the Tudor building boom: the Bishops were wealthy men who could afford to add to the palace according to the latest ideas of comfort. Much of it has been demolished and rebuilt over the centuries, but some Tudor glass which was given to Fulham Parish Church still survives. Although portraits of the various Bishops hang in the building, very little is known about them as people. The Bishops continued owning the Palace until the 1970s but it is now open to the public.

**Maisie Brown, Chairman of Barnes and Mortlake History Society**, was next to speak. Her talk revealed something of the life of a well-to-do farmer in the 17th century, in this case Richard Edwards of Barnes, whose Will and the Inventory of his property taken at his death have survived and give an insight into the lifestyle enjoyed by this sort of family at the time. Although the location of their farmhouse cannot be exactly pinpointed - it may have been near the old manor house - the family had been in Barnes from the beginning of the 17th century, and like other farms within a ten-mile radius of the expanding metropolis of London, profited from supplying food to the London markets, especially meeting the demand for the newly-fashionable fruit and vegetables. Many enterprising men like Edwards rose to be ‘Gentlemen’ farmers.

Continuing an established tradition, immediately after lunch members of the Conferences Steering Committee gave readings from contemporary accounts of social gatherings given at the various grand houses which survive and can still be visited in West London such as Ham House, Boston Manor House and Gunnersbury Park.

This was followed by **Paul Velluet, Assistant Regional Director, English Heritage London Region**, describing the growth of London over the



centuries - it was the biggest city in the world in 1900 - and the impact of public transport on its transformation. It was said that London was designed not on the drawing board, but in the market place.

Urban development was originally along the high roads leading into the city, especially in the Georgian and early Victorian eras, with rather fine houses set within grounds. Mid-Victorian villas and later lower-class houses were built more closely together, but garden suburbs tried to bring back a sense of space and country living. The railways were responsible for yet more urban sprawl; when the railways were being built through London, employing thousands of navvies, nothing had been seen on such a scale since the days of ancient Egypt. The coming of the electric railway meant comfort, reliability and speed; many of the suburban tube stations reflect the vision which went into this new transport system, and are now listed buildings.

After tea, **James Wisdom, Chairman of Brentford and Chiswick Local History Society**, gave the final talk of the day, bringing West London's story up to the present day. He began with several maps revealing the growth of London up to 1929, growth which affected the West London area; for example the workforce required by William Whiteley's farm at Hanworth which supplied his store at Bayswater doubled the population of Hanworth from 1,000 to 2,000.

This talk involved much audience participation as at the speaker's prompting knowledgeable members of the audience offered examples of local industries under different categories which they themselves remembered: canals, brick making, breweries, distillers, potteries, woodyards and sawmills (the latter two industries still needing much research), jam and soap-making, limekilns, gravel extraction, to name but a few of the many industries suggested and discussed.

The huge amount of building work going on in London created a great need for bricks, transport, capital, labour, road building. The settling of families in the newly-built suburbs created a market for material goods like refrigerators and cookers etc., many of which were supplied by firms based in West London. The number of large institutions in the area such as hospitals also needed to be supplied. In the 1920s industry relied more on railways and canals than roads, but distribution now is mostly by motorway.

Modern industries, such as cargo handling at Heathrow, have had an impact on West London, but many companies are now moving their manufacturing base to the Third World.

Looking to the future, the Information Superhighway, strongly endorsed by the Government, will lead to other major changes, especially in the need for transport and roads if people work more from home.

This successful and sold-out Conference was then brought to a close by Chair Valerie Bott.

---

## PAST MEETINGS

---

In February Audrey Collins, one of the band of volunteers who help at the Society of Genealogists building, came to tell us about just some of the research material to be found in the SOG library. She told us that after twelve years she herself still finds material she didn't know was there. In fact the sheer amount of material held is now threatening to burst out of the present building and SOG are now seeking to move yet again to more appropriate premises. The SOG holdings are very varied, contained on three floors the Lower Library, Middle Library and Upper Library v with different categories of archive on each floor. There is always a member of staff and volunteers available at the enquiry desk in the Middle Library.

Mrs Collins strongly advised first consulting the catalogue, which is now available on computer terminals in the building: some material is not on public access, but will be listed in the catalogue. She advised going first to a heading called Thesaurus Terms which is extremely useful, especially if a researcher does not have much information to start with, as under this heading one can key in virtually any category, e. g. a surname, county, etc. Lists on the computer screens are in the same order as the material on the shelves, where bound volumes are colour-coded, e. g. purple for censuses. Mrs Collins pointed out the advantage of consulting births, deaths and marriages 1837-1920 (Lower Library) on microfiche at SOG in that the work can be done sitting down, microfiche machines are available on a first-come, first-served basis, but can be booked in advance, and printers are available for taking copies. The Great Card Index of surnames is still available for browsing.

The Middle Library houses collections covering the British Isles with counties in alphabetical order, plus Scotland, Ireland, Wales, Channel Islands and Isle Of Man. Textbooks are available for consultation, e.g. Phillimore's *Atlas and Index of Parish Registers* and P.H. Reaney's *A Dictionary of English Surnames*. Family History Societies' journals are also held. Mrs Collins pointed out that there is a relevant SOG Guide for various categories in the collections, e.g. *Parish Register copies in the library of SOG* detailed lists of

Registers kept and whether they are indexed plus their shelf mark. Guides on Monumental Inscriptions held are split into regions. Users of the SOG collections can sponsor a purchase (e.g. going halves with SOG on the price) of a book or record they would like them to stock. Census material held (a duplicate set from the PRO), includes a better collection of census indexes than that at the FRC, e. g. Yorkshire, which the PRC does not have.

Other county material held includes directories, electoral registers, Snells Abstracts of Berkshire Wills 1391-1737 (taken from the PCC), Cornwall Pedigrees, Boyds Inhabitants of London: 238 volumes containing about 60,000 citizens, i.e. members of livery companies, 15th - 19th century, and Boyds London Burials (Greater London): a quarter of a million burials (adult males) 1538-1853. Scottish material includes births, marriages and deaths 1855-1920 plus census indexes etc. There is a small collection for Wales and Ireland, with some Irish lists 1836-1800, abstracts of Irish wills (originals have been destroyed) plus monumental inscriptions (including every grave-stone in County Down), with the relevant guides.

The Upper Library contains material on actual family histories, ranging from bound volumes about wealthy families to manuscripts (check in the catalogue). Mrs Collins asked: why not donate your own research results to SOG? Document records contain material on surnames which is not bindable: lists in the library tell which surnames are included; these and the Special Collections (card catalogue), which include groups of families or research collections of former genealogists, are something of a lucky dip: the amount of material on a given surname can vary from very little to a lot. Rolled up pedigrees are kept in storage: apply to the Librarian. The Members Interests records come from forms which members complete when they join ; they are also given birth brief forms to fill in which are kept at the Upper Library's Enquiry Desk. Schools and University Registers include Public Schools, the older Grammar Schools and alumni of the older universities. There is a collection of Army and Navy lists although not a complete run. Maritime sources include Trinity House Petitions, e.g. widows applying for pensions. On the Professions and Occupations shelves the Law and Medical profession are well covered; Civil Service Proofs of Age records are still being indexed so may not be available at present; Crockfords (clergy) is there plus material on other religions. Other indexes cover Boyd's Marriages, arranged by county, wills indexes (including Bank of England wills), marriage licences and apprenticeship indentures 1710-1774 (originals at the PRO). 'Snobs Corner' refers to the collection of material on Heraldry

and the Peerage. There is a collection of biographies. The Overseas section includes USA, Canada, Australia: passenger and immigration indexes, plus the British in India. The collection of Periodicals ranges from Victorian to the present, e. g. Family Tree magazine.

Although the library is closed annually for stock-taking and general tidying-up during the first full week in February, anyone is welcome to “turn up” to help out, although they are advised not to wear their best clothes!

A useful overall guide is available: “*Using the Library at the SOG*”. On alternate Saturdays there is a guided tour of the Library (about 12 people at a time) which can be booked in advance. The nearest station is the Barbican and SOG is a short walk to/from the LMA and the FRC. Opening times: Closed Mondays (but the Bookshop is open); Tuesday, Friday, Saturday 10-6; Wednesday and Thursday 10-8. Membership Fees: there is a joining fee of £7.50; annual subscription is £30.00, which includes Free entrance to the Library plus a quarterly journal, the *Genealogists Magazine*, and discounts in the bookshop plus concessions on SOG lectures and courses.

Society of Genealogists, 14 Charterhouse Buildings, Goswell Road, London EC1M 7BA. Tel: 020 7251 8799, e-mail: [sales@sog.org.uk](mailto:sales@sog.org.uk); website: <http://www.sog.org.uk/>

---

## EDITOR'S NOTES

---

Someone has brought to my attention that anything written at or near the foot of an envelope could be taken by the Post Offices scanning machines as part of an address (and possibly lead to confusion), so I have changed my admonition on the inside front cover of the journal to anyone sending a Members Interests form, or any other material, to me, to put WMFHS at the upper left hand side of the envelope, please.

The centre pages of this issue contain a form for our next Members' Interests Directory, which will be published on microfiche later this year and distributed Free to members with the journal. Please be sure to complete the form and send it back within the stated deadline; if you don't, you'll never know if someone out there had that vital piece of information you've been searching for.

The deadline for the September issue is: 15th July 2006

## NEWMEMBERS

The Society welcomes all new members. The list below comprises those from whom surname interest forms had been received at the time this issue of the Journal was prepared. The interests themselves are listed on the following pages.

- C184 Mr J.L. Campbell, 7 Chipper Court, Georgetown, Ontario,  
Canada L7G 1L4
- C183 Mrs G.B. Carrick, 3 Stonehill Way, Brixworth, Northants  
NN6 9LW
- C180 Mrs S. Casey, 47 Fairfield Road, Broadstairs, Kent CT10 2JU
- C185 Mr L.F. Cleal, 4 Skimmers Field, Holmer Green, Bucks HP15 6RE
- C182 Mr M. Cordery, 80 Garrick Close, Staines, Middlesex TW18 2PH
- F48 Mrs D.M. Farahar, 2 Mayfield Lane, Martlesham Heath,  
Ipswich IP5 3TZ
- F83 Mr J.R. Finch, Farrier's Cottage, Ashwell Hall Stables, Ashwell,  
Oakham, Rutland LE15 7LH
- F76 Mr B.J. Ford, Spindrifft, Crinnis Close, Carlyon Bay, St Austell,  
Cornwall PL25 3SE
- H185 Mr T. Horwood, 76 Easedale House, Summerwood Road, Isleworth,  
Middx TW7 7QF
- H167 Miss E. Houghton, 70 Cornwall Road, Littlehampton, West Sussex  
BN17 6EQ
- M164 Mrs S. Mills, 11 Washingleys, Cranfield, Bedford MK43 0JD
- N31 Mr R. Newland, 117 Stafford Road, Ruislip, Middlesex HA4 6PE
- O23 Mrs L.M. O'Connor, 22 Elmoor Avenue, Welwyn Village,  
Herts AL6 9PD (e-mail: Linda@Marnham43.freeseve.co.uk)
- P104 Mrs J. Parry, 115A Beavers Lane, Hounslow, Middx TW4 6HF
- R88 Mrs M.L. Reeves, 71 Harewood Road, Isleworth, Middx TW7 5HN
- R85 Mr N.F. Richardson, 14 High Street, Rowledge, Farnham, Surrey
- S173 Mrs E.P. Steggals, 26 Lyncroft Avenue, Pinner, Middlesex HA5 1JX
- T56 Mrs A.D. Twite, 99 Grafton Road, Reffley, King's Lynn, Norfolk  
(e-mail: Kelvin8@btinternet.com)

## SURNAME INTERESTS

The table below gives surname interests for the new members listed on the previous page. The format should be self-explanatory. Note that the Chapman County Codes are used in the 'Counties' column. 'ANY' or 'ALL' indicates that, for instance, any date or any place is of interest. When writing to members about entries in this section, please remember to include an SAE.

Surname	Dates	Place	County	Member
ADAMS	Before 1850	Hampton	MDX	R85
ALGAR	19C	Isleworth Area	MDX	S173
ANDERSON	19C	Chelsea Area	MDX	T56
ARCHER	19C	Edmonton	MDX	T56
ASLETT	After 1800	Isleworth Area	MDX	H185
BAKER	18-19C	ANY	HRT	F48
BEST	c1800	Harlington	MDX	C184
BIDEN	18C	ANY	HUN	F48
BIFFEN	18-19C	Westminster	MDX	M164
BIGNELL	19C	Lambeth Area	SRY	T56
BROWN	19-20C	Edmonton Area	MDX	T56
BUCK	18-19C	City of London	LND	T56
BUCKLAND	c1800	Cranford	MDX	C184
BUDD	c1880	Isleworth	MDX	F83
BURROUGHS	ANY	ANY	WIL	N31
CARR	17-18C	Lambeth	SRY	M164
CARTER	After 1880	Fulham Area	MDX	H185
CARTER	After 1940	Hounslow Area	MDX	H185
CHALK	Before 1850	Camden Town	MDX	R85
CHANDLER	Before 1885	Fulham	MDX	C183
CHANDLER	After 1885	Teddington	MDX	C183
CHAPLIN	17-18C	Cheshunt	HRT	M164
CLEAL	1800-1900	Kensington Area	MDX	C185
COCKMAN	c1800	Harlington	MDX	C184
COLE	ANY	ANY	WIL	N31
COLLIER	ALL	ALL	ALL	N31
COLLINS	20C	Hammersmith	MDX	R88

Surname	Dates	Place	County	Member
COLLINS	After 1870	Derby	DBY	R88
CONNELLY	After 1890	Chelsea Area	MDX	H185
COOK	Before 1891	Hemel Hempstead Area	HRT	C182
CORDERY	Before 1881	Harlington Area	MDX	C182
CORNELIUS	All	Chelsea Area	MDX	C180
CUCKOW	Before 1870	ANY	MDX	R85
DAVIS	19-20C	ANY	SRY	F48
DAVIS	19-20C	ANY	MDX	F48
FARAHAR	18-20C	ANY	ANY	F48
FINCH	18-19C	Hounslow	MDX	F83
FOOT	18-19C	ANY	DOR	F48
FOX	Before 1890	St Pancras	MDX	R85
GARDNER	After 1820	Hounslow Area	MDX	F76
GARDNER	Before 1850	Alton Area	HAM	F76
GATES	18-19C	Chelsea	MDX	M164
GATES	18-19C	Westminster	MDX	M164
GEE	ALL	Chelsea Area	MDX	C180
GODDARD	c1800	Isleworth/Brentford	MDX	C184
GRAY	19C	Hammersmith Area	MDX	T56
HALE	ANY	ANY	HRT	N31
HAND	ANY	ANY	WIL	N31
HANN	18C	Windsor	BRK	M164
HART	19C	Hounslow	MDX	F83
HAWKINS	19C	Gibraltar		R88
HICKS	After 1890	Teddington	MDX	C183
HICKS	Before 1860	Taunton	SOM	C183
HOPE	19C	Isleworth Area	MDX	S173
HORWOOD	After 1880	Hammersmith Area	MDX	H185
HORWOOD	After 1900	Isleworth Area	MDX	H185
HUTCHINS	19C	Hounslow Area	MDX	S173
JEFFRIES	After 1940	Barnes Area	SRY	H185
JIFFKINS	After 1850	Hounslow Area	MDX	F76
JIFFKINS	Before 1850	Sydenham	OXF	F76
KOESTER	Before 1870	ANY	MDX	R85
LAMBERT	19C	Fareham	HAM	T56
LANGLEY	17-18C	Hackney	MDX	M164
LAYTON	Before 1760	ANY	MDX	R85

Surname	Dates	Place	County	Member
LEIGHTON	Before 1800	Clerkenwell	MDX	R85
LEWIS	19C	Kensington Area	MDX	T56
LILLYCROP	Before 1885	Hitchin	HRT	R85
LINDSELL	19C	Twickenham	MDX	C183
LINDSEY	19C	Twickenham	MDX	C183
LLOYD	18-19C	Wandsworth	SRY	M164
LLOYD	18-19C	Kingston	SRY	M164
MARLOW	ALL	Chelsea Area	MDX	C180
MARNHAM	Before 1800	ALL	ALL	O23
MASTERS	18C	ANY	DOR	F48
McNEIL	Before 1800	Wisbech	CAM	P104
MILLS	18-19C	Kingston	SRY	M164
MOSELEY	18-19C	Hackney	MDX	M164
NEW	18-19C	ANY	WIL	F48
NEW	19-20C	ANY	MDX	F48
NEWLAND	ALL	ALL	ALL	N31
NICHOLS	After 1860	Hammersmith Area	MDX	H185
NOWLIN	ALL	ALL	ALL	N31
PILCHER	Before 1850	ANY	MDX	R85
POINTER	17-18C	Wesminster	MDX	M164
RANDALL	ALL	Chelsea Area	MDX	C180
RICHARDSON	Before 1850	ANY	MDX	R85
RIORDAN	19C	Lambeth Area	SRY	T56
RITCHINGS	19C	Brentford Area	MDX	S173
ROGERS	Before 1875	Wendover Area	BKM	C183
ROGERS	After 1875	Twickenham	MDX	C183
ROLLS	18-19C	ANY	DOR	F48
RUDGE	18C	ANY	HEF	F48
SANDERS	19C	Twickenham	MDX	C183
SANDERS	18-19C	ANY	HRT	F48
SARDERSON	ALL	ALL	ALL	N31
SELBY	18C	ANY	DOR	F48
SHEPPARD	19-20C	Chelsea	MDX	R88
SHONE	1893-1900	Paddington	MDX	C183
SILLS	1750-1800	Ealing	MDX	H167
SILLS/SELLS/ CELLS	1790-1875	Marylebone	MDX	H167



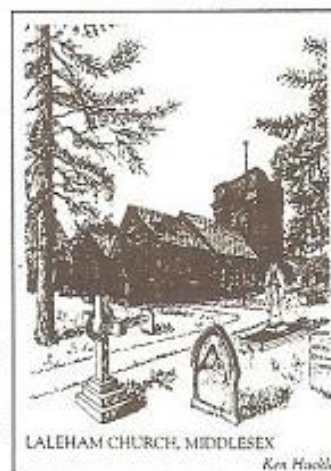
Surname	Dates	Place	County	Member
SILVESTER	Before 1830	Hanworth	MDX	R85
SIMPSON	Before 1850	City of London	LND	R85
SLADE	1820-1890	East Hagbourn	BRK	P104
SMITH	Before 1715	Hanworth	MDX	R85
SNELGROVE	ALL	ALL	ALL	N31
TOMKINS	19C	Isleworth	MDX	F83
TOWELL	Before 1760	ANY	MDX	R85
TUCKER	ANY	ANY	WIL	N31
WARRINGTON	18-19C	ANY	CAM	F48
WARRINGTON	19C	ANY	MDX	F48
WEIR	1820-1890	Victoria Docks	LND	P104
WELLARD	17-18C	Cranbrook	KEN	M164
WESTON	ANY	ANY	WIL	N31
WILKINSON	Before 1870	ANY	MDX	R85
WILSON	17-18C	Shoreditch	MDX	M164
WOODLEY	After 1840s	Oxford	OXF	R88
WOODLEY	After 1880s	Islington	MDX	R88
WOODLEY	20C	Hammersmith	MDX	R88
WOODS	19-20C	Chelsea	MDX	R88
WOODWARD	19C	Paddington Area	MDX	T56
WOOLGAR	18-19C	Chelsea	MDX	M164
WRIGHT	1820-1890	Didcot	BRK	P104

### MIDDLESEX CHURCHES

One of our members, Ken Huckle, has done some pen and ink drawings of several of the churches in our area of interest. There are eleven of them and we have had them printed on to postcards, 105 mm x 148 mm (A6).

They are: Ashford, St Matthews    Staines St Mary's  
 Hampton Church                    Stanwell Church  
 Heston, St Leonards                Sunbury Church  
 Laleham Church                      Teddington Church  
 Littleton Church                      Twickenham, St Mary's  
 Shepperton, St Nicholas

They cost 55p each including postage and can be obtained from: *J. Scrivener, 88 Wheatlands, Heston, Middlesex TW5 0SB* or from the bookstall at our monthly meetings at a cost of 30p. All proceeds to WMFHS funds.



## INDEXES HELD BY MEMBERS

These indexes are intended as aids to research in the West Middlesex area. For members of the Society fees are as stated (please quote membership number); for non-members they are twice what is indicated below, except where specified.

Please note that all enquirers must include a SAE (or IRC). Unless stated otherwise, cheques should be made payable to the holder of the index, not the WMFHS.

**West Middlesex Marriage Index** Pre-1837 marriages in West Middlesex with partial coverage elsewhere in the county. Search for one specific marriage reference: £1 (non-members £2); listing of up to 20 entries for specific surname: £2 (non-members £4). Please supply places/dates/surname variants if known. All enquiries must contain SAE (minimum 220x110mm). Cheques to West Middlesex FHS.

*Richard Chapman, 15 Willerton Lodge, Bridgewater Road, Weybridge, Surrey KT13 0ED*

**West Middlesex Strays** People from or born in our area found in another area. Enquiries £1.00.

*Mrs Wendy Mott, 24 Addison Avenue, Hounslow TW3 4AP*

**Monumental Inscriptions:** Acton, Ashford, Cranford, Chiswick, Ealing, Feltham, Fulham (recorded 100 years ago), Hampton, Harlington, Hayes, Heston, Hillingdon, Hounslow (United Reformed), Norwood Green, Perivale, Staines, Teddington, Twickenham and Uxbridge. Enquiries: free for members, non-members £1.00.

*Mrs Wendy Mott, 24 Addison Avenue, Hounslow TW3 4AP*

**1881 Census Indexes** For fee of £1.00 plus SAE (at least 9"x4") any one county searched for any one surname. Fee will cover the supply of up to four photocopies of the entries found. Cheques payable to Mrs Margaret Harnden.

*Mrs Jill Munson, 41 Trotsworth Avenue, Virginia Water, Surrey GU25 4AN*

**Chiswick Census 1801** Head of household plus numbers of males and females; additional information in some cases.

*Mrs R. Ward, 29 Ernest Gardens, Chiswick, London W4*

**West Middlesex Settlement Records** New Brentford, Uxbridge, Staines, Ealing, Feltham, Friern Barnet, Fulham, Hammersmith, Hanwell, Chelsea. Enquiries £1.00

*Mrs J. Hagger, 9 Mandeville Road, Shepperton, Middx TW17 0AL*

**Divorce Index** An index to divorces reported in *The Times* 1785-1910. Indexed by surname of principal parties, surname of co-respondent(s), and alias(es). Enquiries members free (SAE or IRC and please quote membership no); non-members: £1.50 (UK), A\$4, NZ\$5, inc. postage. Also available on fiche at £8.00 (UK), A\$22. NZ\$26, inc. airmail postage worldwide.

*Mrs. Annie Weare, PO Box 3021, Bassendean 6054, Western Australia.*

**Hammersmith Burials Index** 1664-1837 A search of this Index can be made for £1 per surname plus SAE.

*Apply to: Mrs Margaret Garrod, 54 Potters Lane, New Barnet, Herts EN5 5BQ*

**Hayes St Mary's Parish Registers** Baptisms, marriages, burials 1557-1840. Enquiries £1 per surname.

*Mrs M. Sibley, 13 Blossom Way, West Drayton, Middlesex UB7 9HF*

**Hillingdon Parish Registers** Baptisms 1559-1909, marriages 1559-1910, burials 1559-1948 (churchyard) and 1867-1903 (cemetery). Enquiries £1.

*Mrs M. Sibley, 13 Blossom Way, West Drayton, Middlesex UB7 9HF*

**Isleworth All Saints Parish Registers** Baptisms 1566-1919, marriages 1566-1927, burials 1566-1942. Enquiries £1.00, or \$5 US/Canada.

*Mrs M. Sibley, 13 Blossom Way, West Drayton, Middlesex UB7 9HF*

**Isleworth All Saints Parish Registers** Baptisms 1808-1854, marriages 1754-1895, burials 1813-1879. Poor Law Examinations 1777-1801, 1813-1830. Enquiries £1.00, or \$5 US/Canada.

*Mr A. Powell, 71 Whiteside Road, Brentford, Middlesex*

**Harlington Parish Registers** Baptisms, marriages, burials 1540-1850. Enquiries £1.00.

*Mr P. Sherwood, 5 Victoria Lane, Harlington, Middlesex UB3 SEW*

**Chiswick Marriages** Around 800 marriages October 1678- December 1800. Enquiries, giving approximate date, £100.

*Mr A. Powell, 71 Whiteside Road, Brentford, Middlesex*

**Harmondsworth Parish Registers** Baptisms, marriages and burials 1670-1837. Enquiries £1.00, or 3 IRCs per name.

*Mrs Wendy Mott, 24 Addison Avenue, Hounslow TW3 4AP*

**Feltham Index** An expanding collection of transcripts and indexes relating to the parish of Feltham, Enquiries free, on receipt of a SAE. Contributions welcome.

*Mr P. Watson, 22 Bedfont Road, Feltham, Middlesex TW13 4LT*

**Teddington Index** A growing database of material relating to Teddington and its inhabitants. Enquiries free to WMFHS members, on receipt of a SAE. Additional sources welcome.

*Mr D. Neller, 8 Elleray Road, Teddington, Middlesex TW11 0HG*

**Coastguard Index** All enquiries £5.00 per name.

*Mrs E. Stage, 150 Fulwell Park Avenue, Twickenham, Middlesex*

**West Middlesex War Memorials** Substantial name-list material, consisting of public, churches', schools' and companies' memorials etc, for WWI and WWII and earlier wars where they exist; list not yet complete; information on any other memorials you know of would be welcome. When making an enquiry please include any information on village or town where you might expect a name to be mentioned.

All enquiries, SAE, to: *Ted Dunstall, 43 Elers Road, Ealing, London W13 9QB*

**West Middlesex Family History Society**  
**Area of Interest**

Acton, Ashford, East Bedfont, Chelsea, Chiswick, Cowley, Cranford, West Drayton, Ealing with Old Brentford, Feltham, Fulham, Hampton, Hanwell with New Brentford, Hanworth, Harlington, Harmondsworth, Hayes with Norwood, Hammersmith, Heston, Hillingdon, Hounslow, Isleworth, Kensington, Laleham, Littleton, Shepperton, Staines, Stanwell, Sunbury, Teddington, Twickenham and Uxbridge

If undelivered, please return to:

West Middlesex FHS  
c/o Mrs B. Purr, 9 Plevna Road, Hampton, Middlesex TW12 2BS